



TRANSFORMING LIVES & RESTORING FAMILIES



EPIC LEADERSHIP TEAM

Left to right, front to back

Anthonia Lévy, PhD, LMHC; Nangela Pulsfus, MHL, BSN, RN-C;
 Lori Vogel, MCHRM; Carol Schneider MA, LMHC; Kristine King,
 Teresa Andrews, Tim Atteberry, James Lynam, Vincent DiVico,
 Jim Norman, and Rob Dickinson, APRN

GREETINGS

Message from Nangela Pulsfus, CEO
 and the Leadership Team

2024 has been an inspiring year for EPIC! We've embraced change including new leadership, renovations of our facilities, expansion of programs, and new initiatives and partnerships in our community. We are incredibly excited about EPIC's role in the Mental Health Court Collaborative Planning Committee, our collaboration with the West Augustine Health & Wellness Center, and the long-awaited Second Wind Village, a haven for clients in recovery. Continue reading to learn more about these impactful projects.

We are grateful to you. We understand that without your support as an EPIC partner, supporter, and friend, we could not continue to move forward to provide critical and life-changing/life-saving services to those in our community struggling with substance use and/or mental health disorders.

We look forward to all the good we can do together and thank you for being on this journey with us.

MISSION

To strengthen our community by providing person-centered care to individuals and families impacted by substance use and mental health disorders, and other behaviors through a comprehensive system of Education, Prevention, Intervention, and Counseling.

VISION

The primary leader of quality, comprehensive behavioral healthcare in our community

CORE VALUES

- Ethical & Confidential
- Consumer Focused
- Empathetic & Compassionate
- Committed to Continuous Improvement
- Demonstrating Dignity & Respect
- Culturally Competent & Diverse
- Accessible & Proactive
- Dedicated & Responsive

COMPANY HIGHLIGHTS

EPIC continues to be active in our community and to respond to behavioral health needs. Here are some examples of this from this past year.

Mental Health Court.....	Page 2
West Augustine Health and Wellness Center.....	Page 2
Second Wind Village Planning.....	Page 2 & 3
My Ascension.....	Page 3
MARS Expansion.....	Page 3
Facility Renovations.....	Page 3
EPIC Programs.....	Page 5 & 6
Finance.....	Back Page

MENTAL HEALTH COURT COLLABORATIVE PLANNING COMMITTEE

Mental Health Courts aim to enhance outcomes for individuals facing mental health challenges within the criminal justice system. After extensive discussions with community partners about the necessity for a Mental Health Court in St. Johns County, EPIC took the initiative to coordinate the Mental Health Court Planning Committee over the past year.

The committee focused on developing a comprehensive strategic plan, which included conducting a community-wide needs assessment and visiting nationally recognized Mental Health Court programs. They prioritized data collection and judicial process planning while fostering community support through cross-agency collaboration.

These collective efforts resulted in a thoughtfully designed plan establishing the groundwork for implementing a Mental Health Court in St. Johns County.



Planning Grant Year: November 1, 2023 – October 31, 2024

From left to right:

Back Row:

- Dusty Pye – LSF
- Joseph Lukaszewski – SJSO
- David Gargon
- Probation & Parole
- Craig Atack
- Public Defenders Office
- Shirley Olson – Court Admin.
- Rebecca Sinclair – EPIC
- Anthony Cuthbert – SAPD
- Ben Rich
- State Attorney Office

Front Row:

- Alfred Maguire
- Discover & Recover
- Kristopher Barajas
- Veterans Treatment Court
- Frankie Hammonds – SABPD
- Kristine King – EPIC
- Nancy Russo – SMA
- Sandi Jackson – SMA
- Youseline Mathews – SMA
- Nangy Pulsfus – EPIC

Not Pictured:

- Judge Alexander Christine
- SJC Judge
- Lauren Blocker – SJC
- Virginia Morgan – EPIC Board
- Jason Caban – SJC Jail
- Mark Weinburg – Court Admin.
- Paige Stanton – Care Connect
- Lisa & Chris Taliaferro
- Patients not Prisoners
- Cheryl Virta – NAMI Jax
- Valerie Duquette – BHRC



WEST AUGUSTINE HEALTH & WELLNESS CENTER GROUNDBREAKING CEREMONY

Friday, September 13th at 10:00 AM
938 West King Street

Refreshments and seating provided. Open to the public. Please park along North Brevard and Chapin Street.



RSVP kindly requested
valleygroup.com or

Our CEO Nangela Pulsfus and Mark Bailey from the Bailey Group attended the groundbreaking ceremony of the West Augustine Health and Wellness Center on September 13, 2024.

WEST AUGUSTINE HEALTH AND WELLNESS CENTER

The West Augustine community is rich in history and has deep roots dating back to the post-Civil War era; it also played an essential role in the Civil Rights Movement in the 60's, nurturing important events and inspiring leaders who fought for equality.

EPIC, local organizations and community groups celebrated the groundbreaking of the West Augustine Medical Center this past year. This initiative aims to enhance health outcomes for the West Augustine community and EPIC is excited to become the center's primary behavioral health provider, focusing on offering prevention services and outpatient treatment for residents with mental health and substance use issues. EPIC Behavioral Healthcare, along with supportive partners, is thrilled to provide essential services to this deserving and uplifting community.

SECOND WIND VILLAGE IS PAVING THE WAY FOR NEW BEGINNINGS!

Second Wind Village Example Graphics



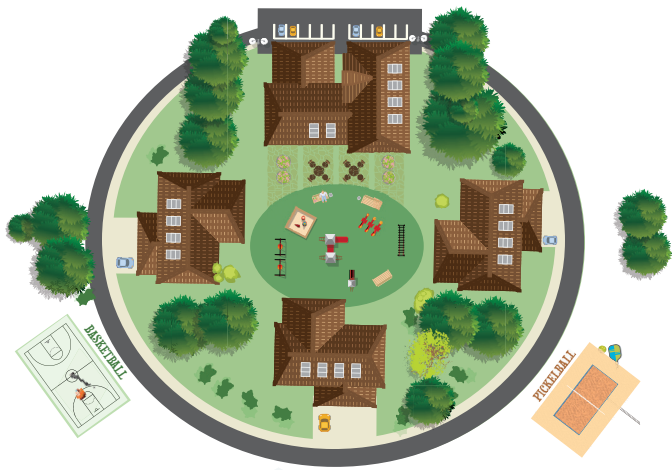
EPIC is excited to announce that our Second Wind Transitional Housing project is underway thanks to legislative funding (under the Opioid Settlement Trust) awarded during the 2024 Florida legislative session.

In Phase One of the project, we are in the process of purchasing property with plans to build four homes: a men's home, a women's home, a home for women with children, and a manager's home.

Since 2018, EPIC has offered sober living homes called Second Wind,

which has one men's and one women's house. Sober-living homes support individuals in recovery from substance use through a recovery-focused atmosphere that assists residents in working towards an independent, drug-free lifestyle.

Our Second Wind residents are EPIC



SECOND WIND

Continued from Page 2

clients who have completed their treatment program. However, they still need support to strengthen and maintain their sobriety. They need safe, recovery-supportive environments that also promote personal responsibility and the development of essential life skills.

Our residents can attest to the impact of Second Wind. One female client shared that *after nearly losing her children, job, and home to alcoholism, she came to EPIC. After completing detox, she moved into our Second Wind's sober living facility, which transformed her life. With our support and connections with others in recovery, she rebuilt her life, found stable housing, and is now on the path to home ownership.* A male client shared that *after a year at Second Wind, he moved out with a solid foundation for his recovery. He emphasized the value of weekly house meetings, which taught him*

important life skills like budgeting and emotional regulation. With the support of staff and peers, he felt ready to continue his recovery independently.

Our vision for the Second Wind Village is to build additional sober living homes on the property and provide structured, secure environments for those in recovery.

As an EPIC supporter, there are opportunities to support this endeavor and help more people in recovery lead successful, independent lives.

To learn more or to support this project financially, scan this QR code.



RENOVATIONS ARE COMPLETE AT OUR CENTRAL AND RESIDENTIAL CAMPUSES!

EPIC's aim has always been to create a welcoming, home-like environment for our clients and employees. A relaxing, calm setting can add value to the counseling or treatment experience. This past year, we received funding to renovate our Central Campus and Residential Treatment Facility to update their functionality and aesthetics. The Central Campus now has a cozier and more productive environment. At the same time, in the Residential Campus, we have created modern and inviting living spaces where our clients can feel at home.



SUICIDE PREVENTION

"MY ASCENSION" COMMUNITY SCREENINGS

In collaboration with INK!, EPIC brought back the "My Ascension" screening for five nights at various schools/sites throughout St. Johns County in 2024. "My Ascension" is a documentary about Emma Benoit, who attempted suicide at age 16 but survived. Now using a wheelchair, Ms. Benoit travels the country sharing her message of hope and resilience. In addition to the screenings, she participated in a panel discussion following each event, allowing attendees to have honest, heartfelt conversations about suicide and mental health.

Emma, Nicki from SAYS & Cydney from EPIC



Christine Cauffield LSF CEO & LSF Staff



Paul Abbattinozzi Associate Superintendent SJCSO



Cathy Newman INK! CEO Emma Benoit, and Teresa Andrews from EPIC

MARS EXPANSION

EPIC's MARS (Medication Assisted Recovery Services) Clinic offers a combination of medications, outpatient counseling, care coordination services and other behavioral therapies to treat opioid and/or alcohol addiction. This year, services were expanded with the addition of brief intervention counseling services and a full-time care coordinator. Additionally, the MARS Clinic expanded into a second office/county as MARS services are now available at EPIC's Flagler County campus. MARS screenings and enrollments are now also conducted at the St. Johns County Jail and through the Hospital Bridge Program enabling quicker access to program services for qualified clients.



MARS CLINIC TEAM
Madison Kenny, Erika Nyquist, Anne Mountain, and Brittany Kassis, Not pictured: Susan O'Malley

EPIC PROGRAMS

In FY 2023 / 2024, EPIC Served 6,212 Individuals

Since 2012, EPIC has proudly received CARF (Commission on Accreditation of Rehabilitation Facilities) accreditation on our behavioral health services. CARF accreditation indicates that EPIC demonstrates conformance to internationally accepted standards, follows person-focused practices that emphasize an integrated and individualized approach to services and outcomes, and demonstrates commitment to quality of programs and services.



OUTPATIENT MENTAL HEALTH, PSYCHIATRIC, AND SUBSTANCE USE SERVICES

EPIC's outpatient programs offer affordable and comprehensive services to individuals aged four and up, aiding their recovery from mental health and substance use disorders. Services include:

- Evaluation and assessment
- Individual and group therapy
- Family therapy
- Crisis intervention
- Medication management
- Support groups
- Recovery activities

Additionally, psychiatric services, including evaluation, treatment, and medication management, are available at all of EPIC's outpatient locations.

This year, our outpatient programs served 2,852.

- Adult MH, 1,008
- Adult SUD, 1,276
- Youth MH, 532
- Youth SUD, 36

Additionally, 712 people received Psychiatric Services

INPATIENT TREATMENT

RAPID RESPONSE SERVICES

EPIC offers Rapid Response Services designed to:

1. Provide on-demand crisis intervention services in any setting
2. Triage, assess, and then refer to appropriate treatment
3. Decrease the effects of trauma

Our Rapid Response Services offer three pathways to receiving immediate services:

- **The Response Team** – Available 24/7, this team provides crisis intervention and counseling for individuals aged 26 and older at the individual's location.
- **Access Support Center** - Walk-in services at three of EPIC's campuses; offers assessments to determine what type of substance use or mental health support is needed

- **Co-Responder Program** - In partnership with the St. Johns County Sheriff's Office, an EPIC clinician rides with law enforcement responding to behavioral health related calls

SJSO is transitioning the Co-Responder Program into a dedicated unit by adding another clinician through EPIC and partnering with Care Connect to include a Care Coordinator.

- **The St. Johns Sheriff's Office (SJSO) made 351 referrals to the Co-Responder Program, resulting in 164 crisis responses and a 90.24% Baker Act diversion rate.**



RAPID RESPONSE TEAM

Tara Boatwright, Rapid Response Team Manager; Joseph Siegfried, Clinician & Gracie Livingston, Peer Support



EPIC ACCESS CENTER

Sandy Caratozzolo, Jeannie Rubino & Skylar Douglas



CO-RESPONDER TEAM

Paige Stanton, Director Tara Wildes, Corporal Adam Hertz, Leslie Waller & EPIC Managing Clinical Director Anthonia Levy, PhD, LMHC

The EPIC Recovery Center offers detoxification and residential treatment. The detoxification unit has 14 beds and the residential unit has 12 beds. The Center offers patients a safe, welcoming environment where they can begin the journey to addiction recovery. Care coordination, medication assisted treatment, and peer support services are provided in addition to the medically monitored detoxification and the 30 day

residential program.

- **Detox & Residential served: 788**

SOBER LIVING

For many who complete inpatient treatment, the next step to achieving successful sobriety is sober living. As noted earlier, EPIC's Second Wind Sober Living provides a safe environment for learning to live independently and drug-free.

- **Second Wind served: 29**

PARTNERSHIP PROGRAMS

EPIC works with community partners to provide services to specific groups. These programs support individuals with substance use and mental health disorders in various circumstances. These include:

J.E.T. (Jail-based EPIC Transition Team)

A partnership between EPIC and the Sheriff's offices of St. Johns and Flagler Counties to reduce the recidivism of frequent criminal justice system users who are also dealing with a substance use and/or mental health disorder.

- **J.E.T. served: Flagler, 153 St. Johns, 125**

THE HOSPITAL BRIDGE PROGRAM

A collaboration with UF Health St. Johns and Ascension St. Vincent's that supports patients admitted for an overdose or other behavioral health issues. This program allows for a warm hand-off from the hospital to an appropriate EPIC program.

- **The Hospital Bridge Program served: 291**

DRUG COURT

A team approach (including the 7th Judicial Circuit, the State's Attorney's Office, District Attorney, Probation & Parole) that helps non-violent offenders with substance use disorders achieve abstinence and reduce recidivism. EPIC provides the treatment component of the program.

- **Drug Court served: Flagler, 55 St. Johns, 91**

PARTNERSHIP PROGRAMS

VETERAN'S COURT

EPIC Behavioral Healthcare collaborates with the court to provide essential substance use and mental health care services to the veterans in the program. It assists those dealing with challenges such as PTSD, TBI, substance use, mental health issues, and suicidal thoughts by helping them access earned services and benefits.

- **Veteran's Court served: 16**

FITT (Family Intensive Treatment Team) – In partnership with the Child Welfare System, this program supports caregivers dealing with substance use disorders and assists them in maintaining or regaining custody of their children.

- **FITT served: 34**

FTC (Family Therapy Coordination)

- After a case opens with the Department of Children and Families (DCF), FTC is usually the first contact with EPIC. It performs screenings for adults with substance use disorders who have children under ten and who are at risk of losing them.

FTC provides case management and resources for up to 45 days, and participation is voluntary.

- **FTC served: 271**

S.M.A.R.T. (Flagler County)

Successful Mental Health and Addiction Recovery Treatment program run in partnership with the Flagler County Sheriff's Office. This program offers mental health and substance use screenings and group counseling to help inmates successfully reintegrate into the community.

- **SMART Flagler served: 105**

S.M.A.R.T. (St. Johns County)

State Attorney Mission to Assist Thriving Rehabilitation and Treatment program – a pretrial diversion program in collaboration with the State Attorney's Office that helps individuals with repeat on-violent misdemeanors. Inmates can have the charges dropped by following the SMART program.

- **SMART St. Johns served: 16**

S.I.G.H.T.

(Serenity, Integrity, Goals, Hope, Trust.)
- In collaboration with the St. Johns County Sheriff's Office, SIGHT is a treatment program with Phase One taking place in the St. Johns County Jail as an in-jail intervention program and Phase Two is 16 weeks post-release outpatient treatment.

- **SIGHT served: 77**

PREVENTION

EPIC's Prevention Unit offers programs aimed at educating children, adolescents, families, and the community about preventing drug and alcohol misuse and mental health disorders.

Key programs include:

- **THINK! For Success Program**
Educates minors about tobacco and nicotine products and the effects of alcohol and substance use
- **Catch My Breath** – Focuses on preventing youth vaping
- **Active Parenting** – Promotes positive parenting practices

- **Prevention unit served: 472 Youth & Young Adults and 50 parents**



A suicide prevention strategy, Talkable Communities (a collaboration of five Northeast Florida behavioral health providers), promotes a community where people can discuss well-being and suicide without feeling stigma or shame. The program includes offering three suicide prevention training courses free to the community:

- **It's Time to Talk About It (ITTAI)**
- **Question, Persuade, Refer (QPR)**
- **Youth Mental Health First Aid (YMHFA)**

- **This past year, EPIC trainers provided virtual and in-person sessions, training 565 individuals in suicide prevention strategies.**



Some of our Littles with their EPIC Bigs



2024 Big and Little of the Year Kevin & Chase



2025 Big and Little of the Year Marley Ray & Lael



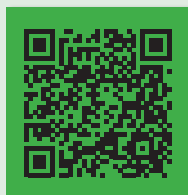
PREVENTION TEAM
Sheridan El Asry, Ashley Flores, Heather Antolak, & Christina Wilson
Not pictured: Kevin Hine and Cydney Krulcik



Big Brothers Big Sisters
OF ST. JOHNS COUNTY

EPIC has sponsored Big Brothers Big Sisters of St. Johns County (BBBS) since 1994. As part of the nationally recognized BBBS of America, our program offers site and community-based mentoring with one-to-one relationships between caring adult volunteers and local youth. Proven as a substance use prevention strategy, BBBS is an important part of EPIC.

- **This year, BBBS matched 94 children with mentors.**



IT TAKES LITTLE TO BE A BIG

Become a mentor, a champion for youth.

Mentors (**Bigs**) are consistent, caring adults who are friends to children between the ages of 6-12 yrs. (**Littles**) who need extra support.

Scan the QR code or visit bbsstjohns.org for more information and to get started.

bbsstjohns.org
904-829-9986

EVENTS, MARKETING, & FUND DEVELOPMENT

The Fund Development Department is responsible for EPIC's fundraising and marketing efforts. Our goal is to secure reliable income that enhances our capacity and sustainability while highlighting EPIC's essential role as a behavioral health provider. Through this department, EPIC offers many of our community's fun and popular events including: Taste of St. Augustine, Race to the Taste 5K, Flower & Garden Expo, Ancient City Kids Day, Recovery Fair, and Tips for Kids Sake.

TASTE OF ST. AUGUSTINE

A beloved food festival taking place each April.



RACE TO THE TASTE 5K

A 5K combined with the Taste!

FLOWER & GARDEN EXPO

A must attend event for those who love to garden, happens each March.



ANCIENT CITY KIDS DAY

A day of free family fun held each October

TIPS FOR KIDS' SAKE

BBBS fundraiser featuring local Celebrity Waiters held every February and March



RECOVERY FAIR

Celebrates National Recovery Month each September



Community Outreach

Participating in outreach events to ensure people are aware of EPIC services.



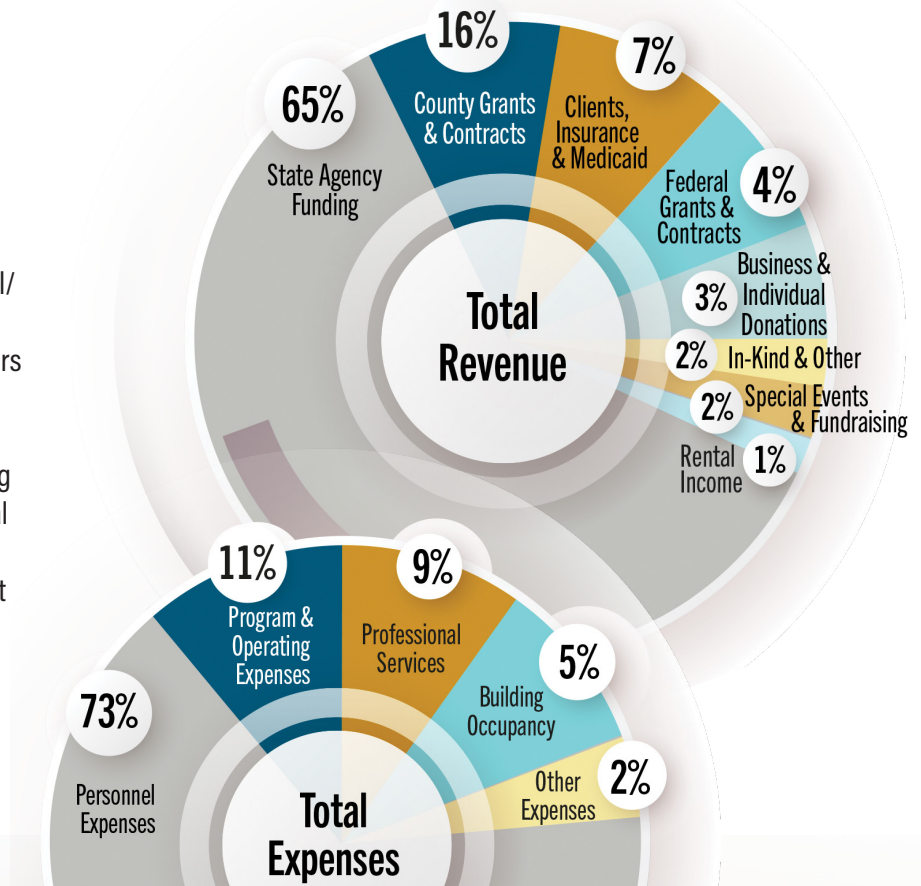
Tonya Kuc Foundation – A partner in suicide prevention. Last year EPIC was the beneficiary of their annual Kickball Tournament, and EPIC participated in the tournament.

COMMUNITY OUTREACH & SUPPORTING OUR PARTNERS

This department also engages in community outreach to support our partners across St. Johns and Flagler Counties. Our goal is to raise awareness of EPIC's services among local residents and various industries.

FINANCE

EPIC relies on diversified funding streams such as government grants, community support, insurance, Medicaid, and fundraising to provide the variety of services offered to our community. EPIC receives 65% of its funding from the State of Florida Budget for Mental/Behavioral Healthcare. The remaining funds come from Federal, St. Johns, and Flagler County grants, Big Brothers Big Sisters, United Way, Insurance, Medicaid, and self-pay services. In addition, we host special fundraising events throughout the year to provide additional funding and community awareness of our services. The financial team at EPIC is committed to being good stewards of all funding and has prepared a balanced budget to support operations for the organization's future growth.



THANK YOU!

EPIC BOARD OF DIRECTORS

Virginia Morgan - President
 Jamie Welu - Vice President
 Lorna MacDonald - Secretary
 John Prioleau, M.D. - Treasurer
 Daniel A. Mowrey - Past President
 Polly Andrews
 Shelby Cline, M.D.
 Kristy Colon
 Gina Mangus
 Patrick Morrissey
 David Upchurch
 James Suplee

EPIC PRESIDENTS' COUNCIL

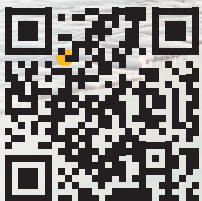
Bill Abare
 James Bedsole
 H. Jeff Bell
 James E. Browning
 Jim Hays
 Sean Kelley
 Tom Morton
 Gary Smolek
 Beverly Slough
 Susan Swain
 Mary Tinlin
 David Upchurch
 Darwin White

BIG BROTHERS BIG SISTERS ADVISORY COUNCIL

Zach Alfant - Chair
 Heidi DeRossett - Vice Chair
 Shelby Cupulo - Hodges
 Ed Martinez
 Christy Opsahl
 James Suplee

James McCune - Legal Counsel

SPECIAL THANK YOU TO OUR PARTNERS



Phone (904) 829-2273 | EPICBH.org



United Way of St. Johns County



Big Brothers Big Sisters OF FLORIDA

Northwest Campus
 175 Hampton Point Dr, Ste. 4,
 St. Augustine, FL 32092

North Campus
 3910 Lewis Speedway,
 St. Augustine, FL 32084

Central Campus & Admin.
 1400 Old Dixie Highway,
 St. Augustine, FL 32084

EPIC Recovery Center
 3574 U.S. 1 South,
 St. Augustine, FL 32086
 (904) 417-7100

Flagler County Campus
 2323 N. State Street, Suite 57,
 Bunnell, FL 32110
 (386) 309-8083